

Involvement

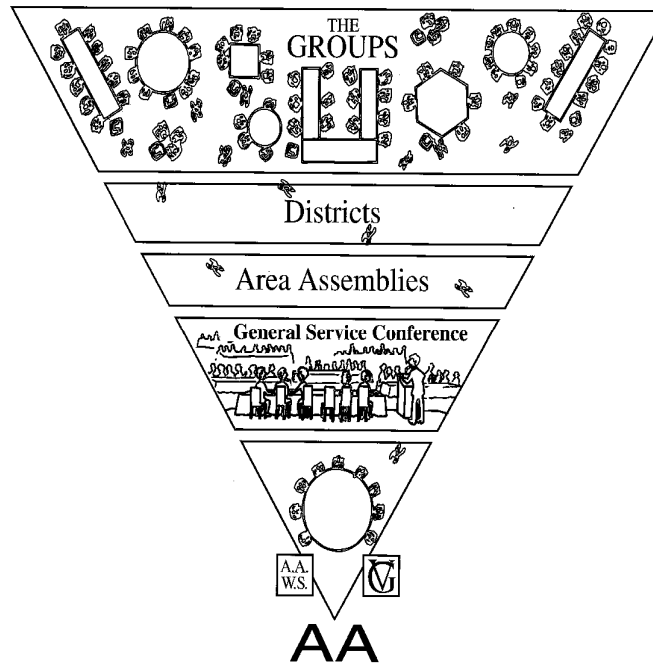
We invite members to become involved in the districts and the area. Attend one of your monthly district meetings. Check out the Assembly. These are great ways to “test drive” service work and grow in your recovery. The districts and the area needs volunteers for committees: Correctional Facilities (CF), Treatment Facilities, Grapevine, Public Information (PI), Cooperation with the Professional Community (CPC), Archives, Special Needs/Accessibility (SN/A), Bridging-the-Gap (BTG), Area and district newsletters, Webmaster, Missouri State Convention Committee, etc. And, most importantly, AA service needs as many GSRs as possible: to give their groups a voice.

To find out more: call or visit our area website eamo.org. Here you can connect with districts, committees and area officers.

Archives welcomes your group histories, and thanks the groups who have already participated. Please do not discard district and group items – flyers, copies of records such as group inventories, etc. – send to Archives.



General Service Structure of the Conference: US and Canada



Missouri Eastern Area AA

14 Sunnen Drive, Suite 144
Maplewood, MO 63143
Phone: 314-644-1130
Web: eamo.org
See website for E-mail addresses

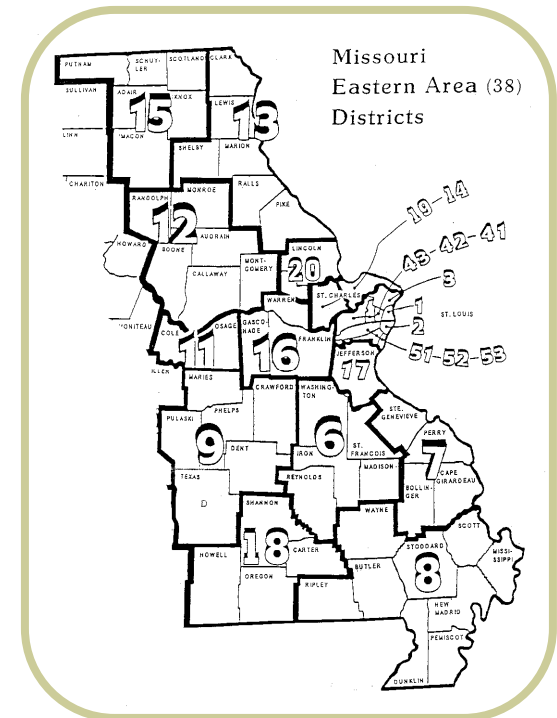
Assembly every 3 months:
Viking Holiday Inn, 10709 Watson Rd.,
Sunset Hills, MO 63127
For 2011: Jan.15, Apr. 2, Jul. 9, Oct. 1

Missouri Eastern Area Archives

14 Sunnen Drive, Suite 144
Maplewood, MO 63143
Phone: 314-644-1130
E-mail: archives@eamo.org
Open: 1st Wed/month, 1PM - 6PM
3rd Sat/mo. working session
10AM - 12N

EAMO

Welcome to Area 38 Eastern Missouri AA Office and Archives



Tel: 314-644-1130

*Serving Eastern
Missouri AA*

What is the Eastern Area of Missouri AA (EAMO)?



Eastern Missouri has (in 2009) 553 Groups registered with the General Service Office (GSO). These groups combine to form 23 Districts. (Please see districts map on cover.) The Eastern Area (#38) is comprised of these 23 districts. The purpose of the Area is to serve AA members and

Groups throughout Eastern Missouri as a part of the General Service Conference structure.

GSRs, district members, and interested AA members meet for quarterly Assemblies to discuss AA business, participate in workshops and network with AAs around the Area.

The groups and their members, especially the groups' General Service Representatives (GSRs), are the most important part of the Area structure. From the group to the General Service Board, there are many lines of communication. Each Spring, an elected delegate from each of the 93 areas in the US and Canada meet together at the General Service Conference to discuss the matters and concerns of AA. We are Area 38. The group input is communicated to the delegate and the Conference. The delegates then report back to their areas and the GSRs report back to their groups the matters discussed at the Conference.

All AAs are welcome to attend our Assemblies.

GSRs usually meet monthly at district meetings.

Our Area (38) and Western Missouri (Area 39) join together each July for our Missouri State Convention.

Archives

Archives is an active part of the Eastern Area.

1. It organizes and houses historical AA literature, artifacts, documents and histories – group, district, area – from around E. Missouri.
2. It is the repository of records, such as business minutes of the groups, districts, area.



The Archives reading area is available for reading documents, listening and viewing tapes and discs.

3. Archives volunteers help members to research records.
4. Archives provides an AA library area for members.



Several ongoing and upcoming major Archives projects are: compiling group histories from around the area, digitizing archival records, and updating our area history.

How does the Area differ from Central Services/Intergroup?

The area links the groups and the General Service Conference in New York, and is involved – as are the districts – with many services: outreach to professionals and the public, work with corrections, treatment centers, alcoholics with special needs, etc.

Central Services (CSOs)/Intergroups serve more locally. They facilitate 12th Step calls, carry an abundance of AA literature, produce meeting directories and newsletters, serve as clearing houses for calls of all types.

Members of the Fellowship are familiar with their local Central Service offices, which are often the “first face of AA” for the alcoholic and the public .

EAMO may not be as widely known. Most of our area work is done outside of the office.

Both CSO and EAMO focus on our primary purpose: service to help carry the message; also, working to enhance unity with Eastern Missouri AA groups.

Eastern Missouri Intergroup activities started in 1944. The Missouri Area was formed in 1951. In 1957, it divided into 2 parts: the Eastern Area and Western Area. In 1974, our Area Archives was established.

What is the reason for separate Central Services and Eastern Area offices?

CSO and EAMO serve different functions in AA. We both follow tradition 6: we cooperate with each other, but do not affiliate. Our office is just down the hall from Central Services. Starting in January, 2011, the Area office will be open every Wednesday 1PM - 6PM.



Responsibility Declaration:

I am responsible.

When anyone, anywhere, reaches out for help, I want the hand of AA always to be there.

And for that: I am responsible.

Missouri Eastern Area AA

14 Sunnen Drive, Suite 144
Maplewood, MO 63143
Phone: 314-644-1130
Web: eamo.org

Missouri Eastern Area Archives

14 Sunnen Drive, Suite 144
Maplewood, MO 63143
Phone: 314-644-1130
E-mail: archives@eamo.org